

# Pesticide Contamination and Repatriation Working Group

Nicole Grabow, Director of Preventive Conservation  
Midwest Art Conservation Center

[ngrabow@PreserveArt.org](mailto:ngrabow@PreserveArt.org)

Over 70 members including:

- THPOs
- Tribal members
- Art Conservators
- Conservation Scientists
- Industrial Hygienists

We meet quarterly via zoom

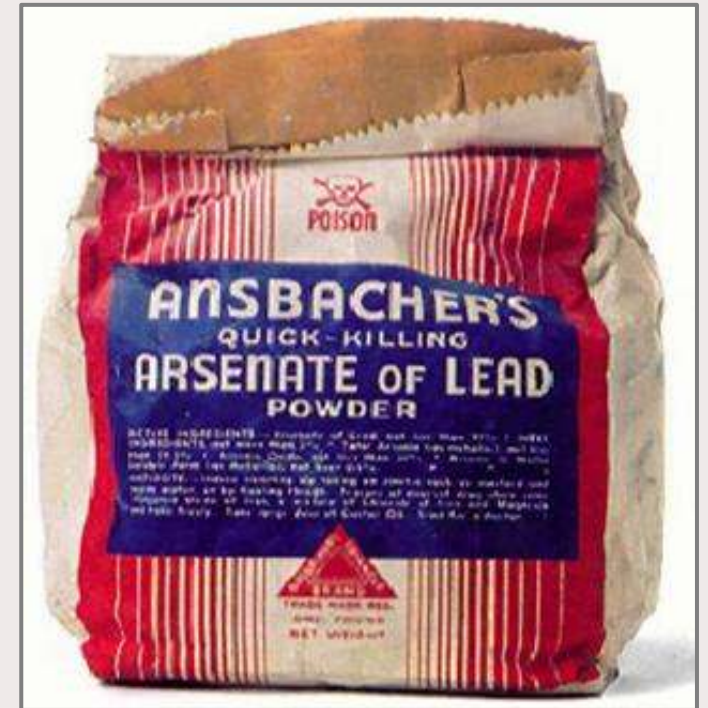
This is a collaboration to facilitate safe repatriations



# Pesticides in Collections



- Arsenic
- Borate
- Carbamate/thiocarbamate
- Carbon disulfide
- Carbon tetrachloride
- Cydrocyanic acid
- Dichlorodiphenyltrichloroethane (DDT)
- Ethylene dichloride
- Ethylene oxide
- Lindane
- Lead Arsenate
- Mercuric chloride
- Methyl bromide
- Naphthalene
- Para-dichlorobenzene (PDB)
- Pentachlorophenol (PCP)
- Pyrethrin
- Sodium aluminum fluorosilicate (Larvex)
- Strychnine
- Sulfuryl fluoride
- Thymol



# Safety Guidelines

- Assume that hazardous pesticides are present.
- Wear nitrile gloves (not cotton or latex)
- Remove gloves so that hands do not touch the exterior surface
- Discard gloves and wash hands
- Wear a lab coat
- Keep lab coats clean so as to avoid transferring dust and dirt
- Work with materials in a well-ventilated area
- Do not eat or drink in work areas
- Clean work surfaces with soap and water after contact
- Clean contaminated clothing separately
- If there are concerns about exposure, consult a board certified occupational medical doctor or toxicologist.



Based on a 2000 monograph by Monona Rossol (Conservation Scientist, Arts, Crafts, and Theater Safety) and Jane Sirois (Conservation Scientist, Canadian Conservation Institute) <http://bss.sfsu.edu/calstudies/arttest>

# Goals of the Working Group

- Raise awareness of the possibility of contamination with toxic pesticides
- Support institutions in developing pesticide histories
- Create a list of pesticide testing facilities
- Establish consistent protocols for pesticide testing
- Develop online education resources for Tribes





# Coming Soon

Free webinar hosted by Connecting to Collections Care on November 12<sup>th</sup>

Online course hosted by Connecting to Collections Care early in 2025.

5 sessions.

\$150.

[www.connectingtocollections.org](http://www.connectingtocollections.org)



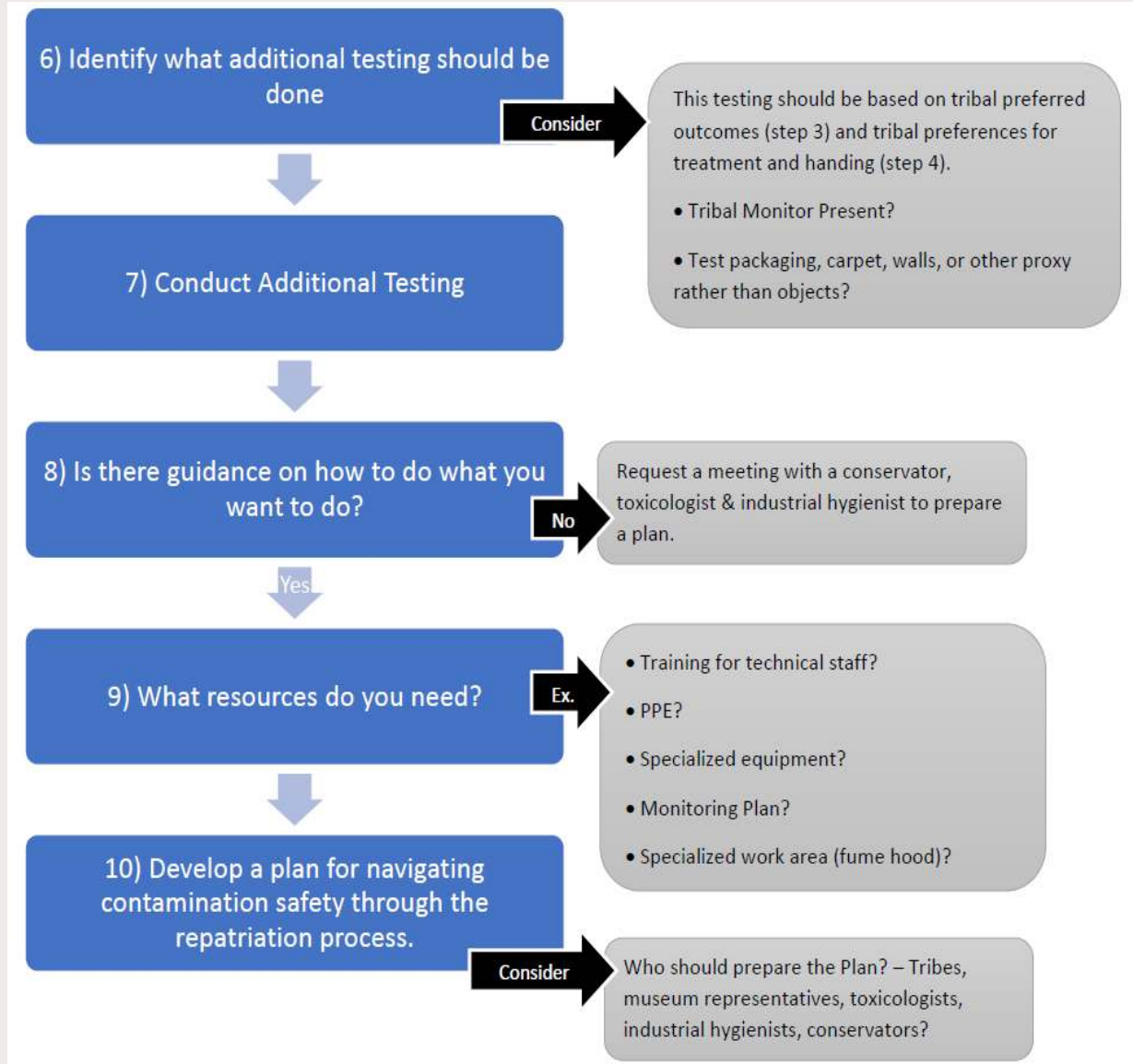
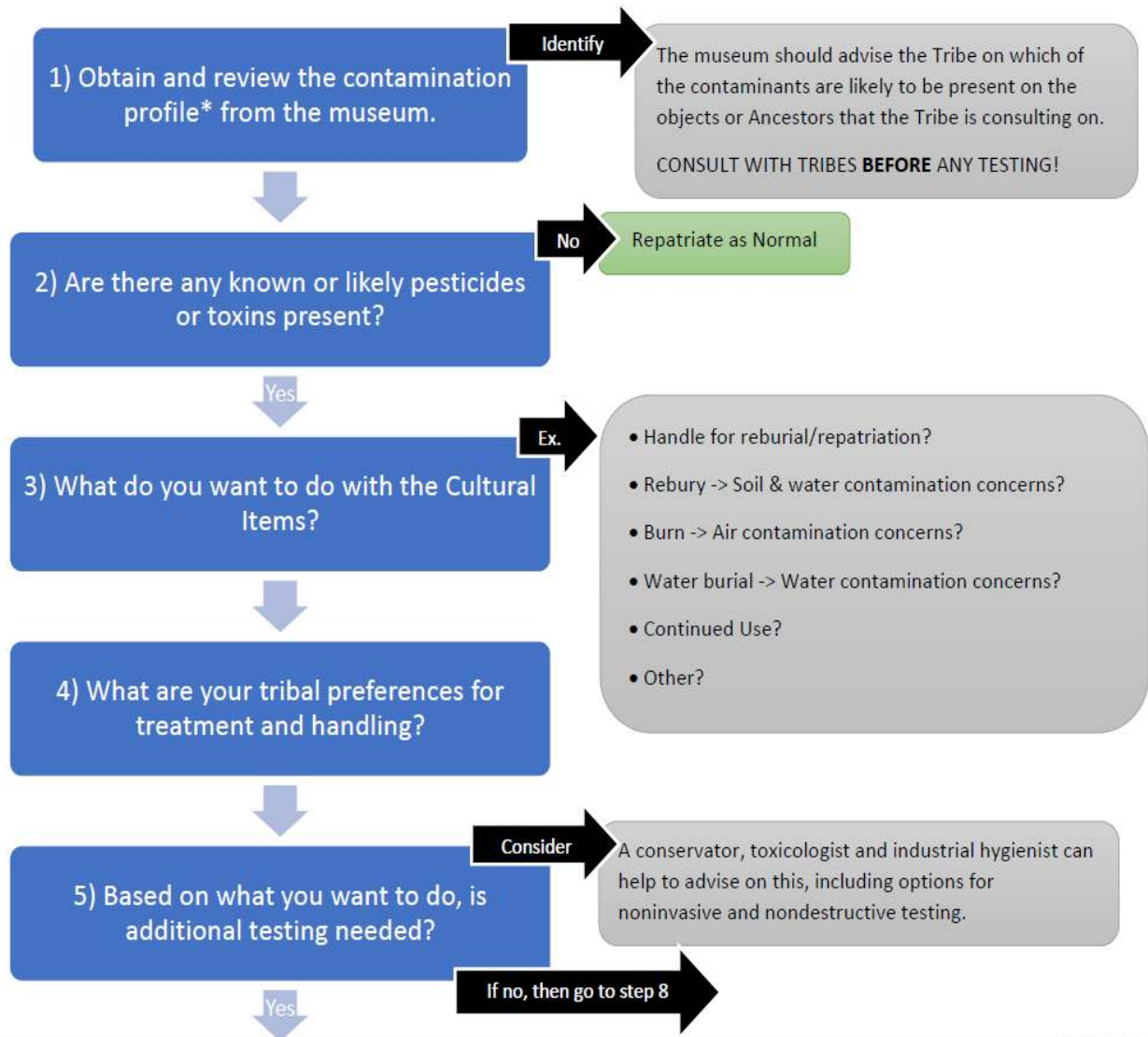
foundation  
for advancement  
in conservation

**Protecting Cultural  
Heritage**



INSTITUTE *of*  
**Museum and Library**  
SERVICES

Navigating Contamination Through Repatriation: A Guide for Tribes



Flowchart prepared by Melodi McAdams, UAIC Tribal Heritage Manager